

Route 4: Bar - Vrbnica Railway Line

Sustainable transport
Flagship 2 · Connecting North to South

The European Commission supports the Western Balkans in bringing the region's core transport network up to EU standards.

The Bar – Vrbnica railway line is the backbone of the Montenegrin railway system and is part of the indicative extension of the Trans-European Transport Network's Core Network Corridors into the Western Balkans. With EU financial assistance for project preparation and investment co-financing under the **Economic and Investment Plan**, Montenegro is upgrading the infrastructure on this line to create a multimodal maritime-rail transport route from the port of Bar to the wider region.

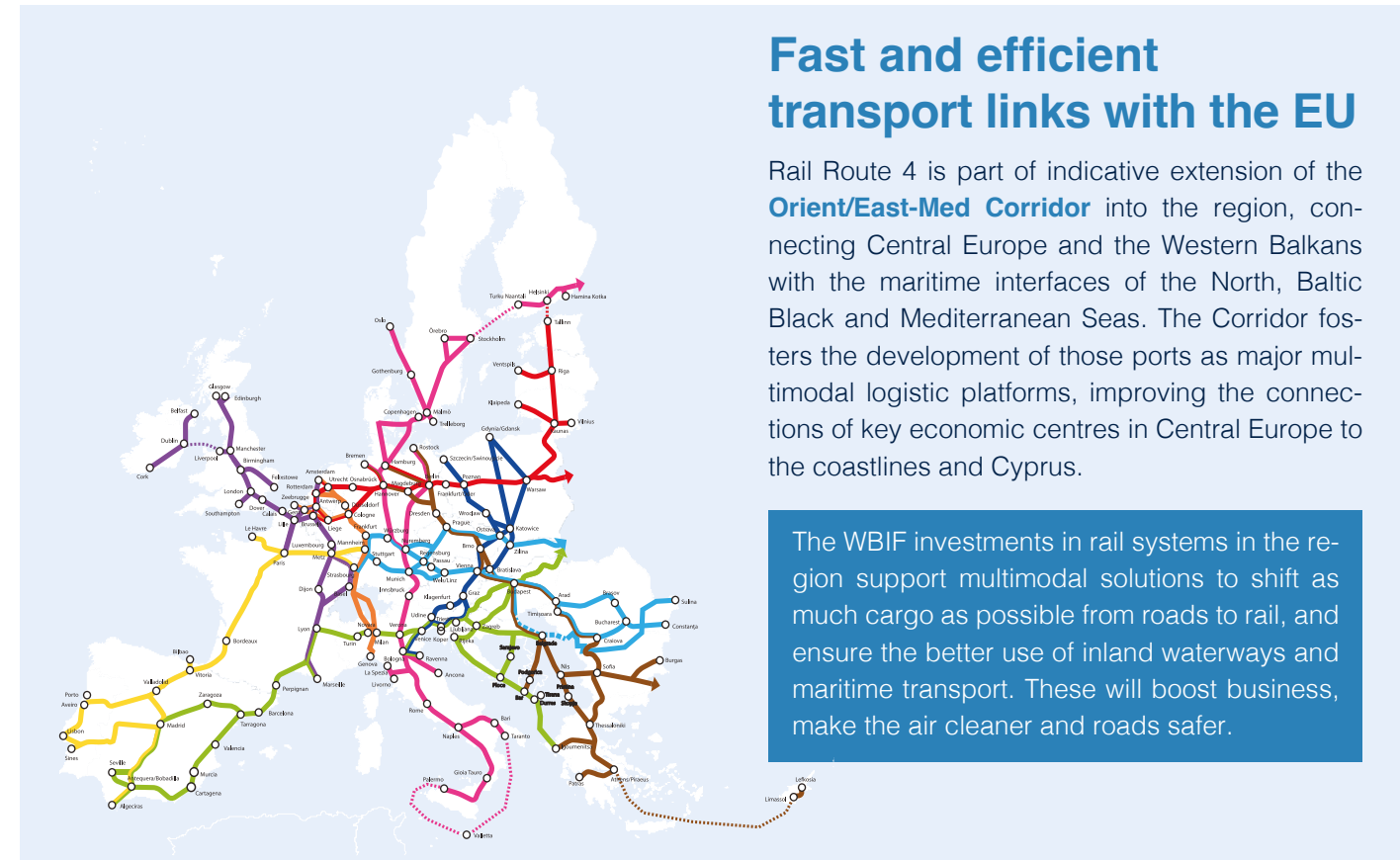
€405m estimated total investment

€191m EU grants approved

168 km EU supported length

Co-financiers:

March 2024



Fast and efficient transport links with the EU

Rail Route 4 is part of indicative extension of the **Orient/East-Med Corridor** into the region, connecting Central Europe and the Western Balkans with the maritime interfaces of the North, Baltic Black and Mediterranean Seas. The Corridor fosters the development of those ports as major multimodal logistic platforms, improving the connections of key economic centres in Central Europe to the coastlines and Cyprus.

The WBIF investments in rail systems in the region support multimodal solutions to shift as much cargo as possible from roads to rail, and ensure the better use of inland waterways and maritime transport. These will boost business, make the air cleaner and roads safer.

Results and benefits

- Multimodal maritime-rail transport route** from the port of Bar to the wider region
- Improved mobility for **1.4m** passengers annually
- Freight carrying capacity increased from **1.2m to 1.5m** tonnes/year
- Maximum speed increased to **120 km/h**
- Seamless, safe and sustainable mobility of passengers and goods
- Integration with the Trans-European Transport Network

EU co-funded investments



- New signalling systems at Podgorica major railway junction**
Status: completed
- Rehabilitation of 6 slopes impacted by landslides**
Length: 2.96 km
Status: completed
- Rehabilitation of 24 concrete bridges**
Length: 2.94 km
Status: completed
- Rehabilitation of 8 tunnels**
Length: 2.83 km
Status: under construction
- Rehabilitation of Lutovo – Bioče section and 3 steel bridges, overhaul and equipping of workshops in Bar, Podgorica and Niksic**
Length: 20.18 km
Status: under preparation
- Rehabilitation of 10 steel bridges and 8 tunnels**
Length: 5.12 km
Status: under preparation
- Reconstruction of Bar – Golubovci section**
Length: 39.6 km
Status: under preparation

* This designation is without prejudice to positions on status, and is in line with UNSCR 1244/1999 and the ICJ Opinion on the Kosovo declaration of independence.